

# Drop-down seals for glass doors

Optimised design – delicate and elegant

 **Planet**  
**ASSA ABLOY**

SWISS MADE

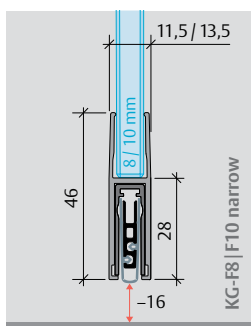
Experience a safer  
and more open world

## Seals in a narrow, optimised design:

### Planet **KG-F narrow**, **KG-Fs**, **KG-A narrow** and **KG-S narrow**

- Sound insulation value: **48 dB** (at 7 mm ground clearance)
- Seal height up to **16 mm** or **18 mm** (KG-F12s|F16s)
- Stock lengths: 459, 584, 709, 834, 959, 1084, 1209, 1334, 1459 mm, can be shortened max. 125 mm

**Optional:** Protection profile in special colour anodised or powder-coated (on request)

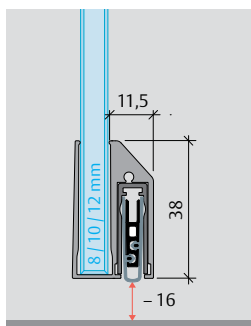
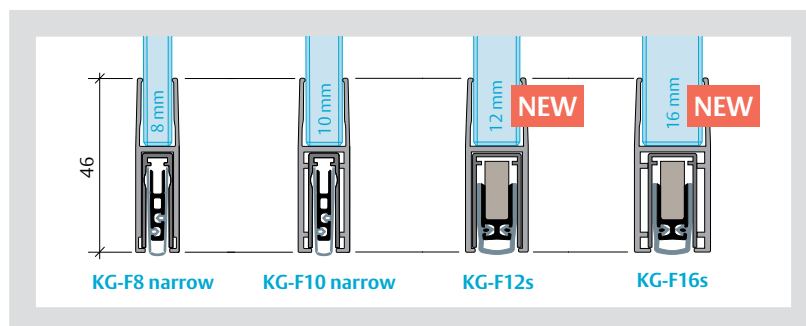
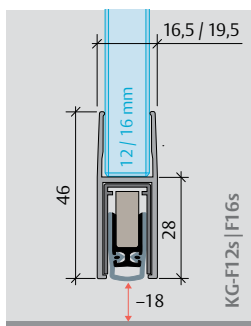


#### Planet **KG-F8|F10 narrow**, Planet **KG-F12s|F16s**

- For single-leaf and double-leaf all-glass doors with 8, 10, 12 and new 16 mm glass thickness (16 mm glass thickness is suitable for fire doors)
- Drop-down seal for attaching and gluing

#### Versions

- Smoke-proof (RD) or fire-resistant and smoke-proof (FH+RD)
- Surface: silver anodised finish EV1 or stainless steel satin anodised (INOX)

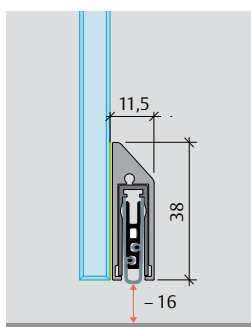


#### Planet **KG-A8|A10|A12 narrow**

- For single-leaf and double-leaf all-glass doors with 8, 10 and 12 mm glass thickness
- Drop-down seal for attaching and gluing

#### Versions

- Smoke-proof (RD) or fire-resistant and smoke-proof (FH+RD)
- Surface: silver anodised finish EV1 or stainless steel satin anodised (INOX)



#### Planet **KG-S narrow**

- Quick installation, ready for use immediately after installation thanks to the supplied fixing screw
- Glued on the side with UV glue or double-sided tape
- Suitable for all glass thicknesses, also for wooden, PVC and metal doors

#### Versions

- Smoke-proof (RD) or fire-resistant and smoke-proof (FH+RD)
- Surface: silver anodised finish EV1, stainless steel satin anodised (INOX) or black C35 satin anodised



Also available:

**Planet KG-SM set, narrow**, the complete set with everything you need for quick and easy installation of the KG-S narrow seal.

#### Versions

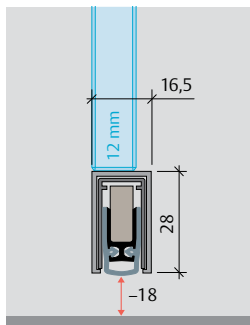
- Smoke-proof (RD)
- Surface: silver anodised finish EV1, stainless steel satin anodised (INOX) or black C35 satin anodised

# These seals complete the Planet KG range:

## Planet KG-U, KG-D, KG-SL10 and KG-MinE-S10

- Sound insulation value: **48 dB** (at 7 mm ground clearance) or up to **44 dB** (KG-SL10 and KG-MinE-S10)
- Seal height up to **18 mm** or **27 mm** (KG-Mine-S10)
- Stock lengths: 459, 584, 709, 834, 959, 1084, 1209, 1334, 1459 mm, can be shortened max. 125 mm

**Optional:** Protection profile in special colour anodised or powder-coated (on request)

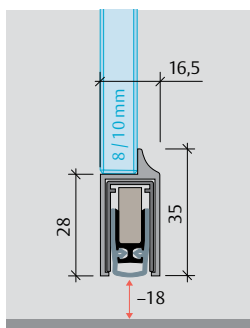


### Planet KG-U

- For single-leaf and double-leaf all-glass doors from 12 mm glass thickness
- Glued to glass bottom edge with UV adhesive

#### Versions

- Smoke-proof (RD) or fire-resistant and smoke-proof (FH+RD)
- Surface: silver anodised finish EV1 or stainless steel satin anodised (INOX)

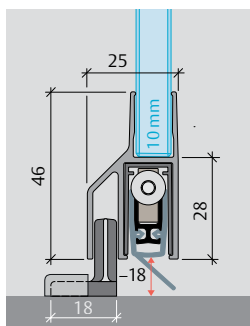


### Planet KG-D8|D10

- For single-leaf and double-leaf all-glass doors with 8 and 10 mm glass thickness
- Glued to glass bottom edge with UV adhesive
- Suitable for functional doors

#### Versions

- Smoke-proof (RD) or fire-resistant and smoke-proof (FH+RD)
- Surface: silver anodised finish EV1 or stainless steel satin anodised (INOX)

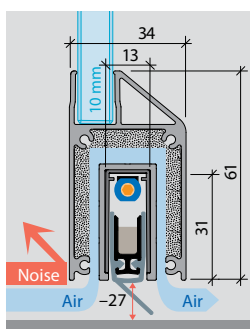


### Planet KG-SL10

- For 10 mm thick all-glass sliding doors
- Drop-down seal for attaching and gluing

#### Versions

- Smoke-proof (RD) or fire-resistant and smoke-proof (FH+RD)
- Surface: silver anodised finish EV1 or stainless steel satin anodised (INOX)



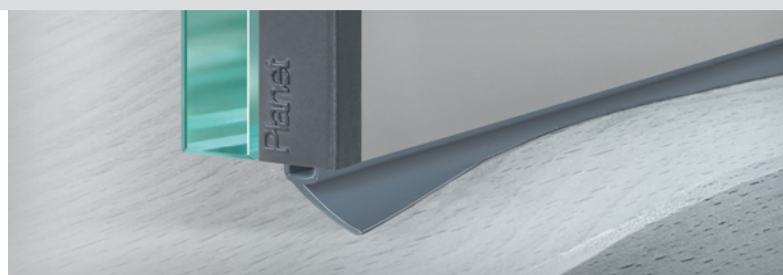
### Planet KG-MinE-S10

- For 10 mm thick all-glass doors with air circulation
- Especially for Minergie, passive and KfW efficient houses, climate
- Closed rooms with ventilation /WC/bath
- Measured value 30 m³/h with pressure difference of 3.9 Pa (with door width 1050 mm)
- Drop-down seal for attaching and gluing

#### Versions

- Surface: silver anodised finish EV1 or stainless steel satin anodised (INOX)

All seals are optionally also available with a **tilting lip for wavy floors.**



The ASSA ABLOY Group is the global leader in access solutions. Every day we help people to feel safer and more secure and to experience a more open world.

**ASSA ABLOY**  
Opening Solutions

Subject to technical changes. 90228.1EN / 03.2021 / 300

ASSA ABLOY (Schweiz) AG  
Drop-down seals & finger protection  
Neustadtstrasse 2  
CH-8317 Tagelswangen  
Phone +41 43 266 22 22  
[www.planet.ag](http://www.planet.ag)

